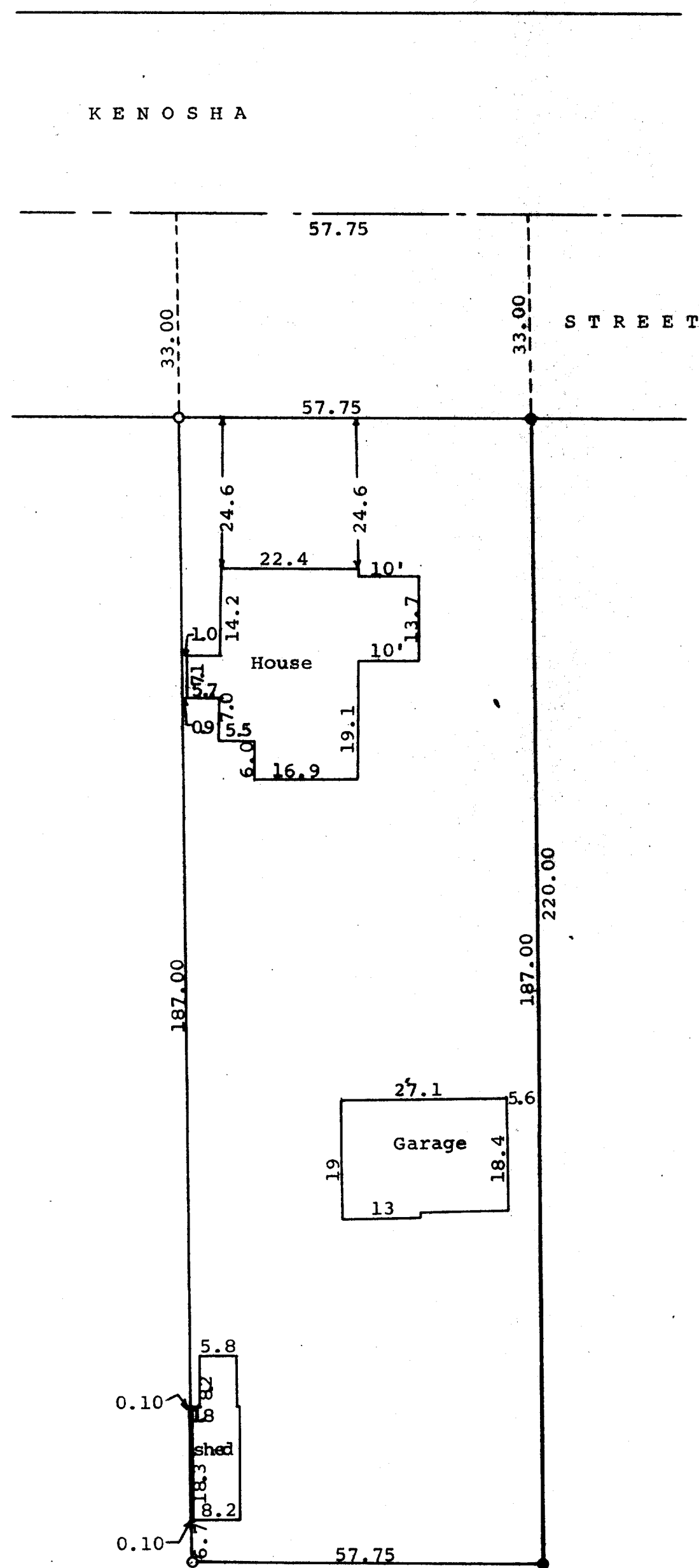


GEORGE T. DUNHAM
SURVEYING & SUBDIVIDING
DELAVER, WISCONSIN



Scale = 1" = 20'
○ = Iron Pipe
● = Concrete Monument

STATE OF WISCONSIN)
WALWORTH COUNTY) ss
I, George T. Dunham, Surveyor, certify that I
have surveyed the property described as follows,
Outlot 204 of the Assessors Plat of the Village
of Walworth, Walworth County, Wisconsin.
and that above plat is an accurate survey and a true
representation thereof and correctly shows the exterior
boundary lines and location of buildings and the correct
measurements thereof.
October 27, 1967

George T. Dunham
George T. Dunham, Surveyor